

Regency Place, Canterbury, CT1 1YS

£1,500 Per Calendar Month



Regency Place

Canterbury CT1 1YS

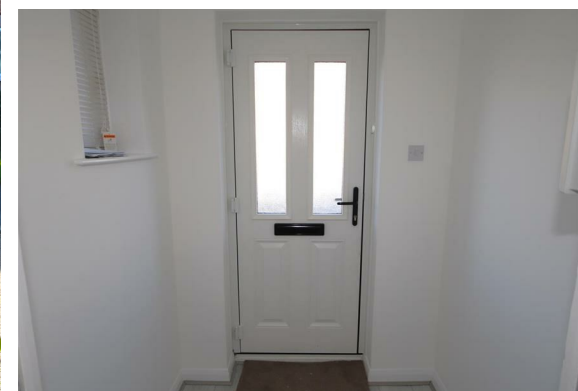
Nestled in the charming Regency Place, Canterbury, this delightful mid-terrace house offers a perfect blend of modern living and classic appeal. Spanning an impressive 1,389 square feet, this property is thoughtfully arranged over three storeys, providing ample space for families or those seeking a comfortable home.

The residence boasts four well-proportioned bedrooms, ensuring that there is plenty of room for family members or guests. The family bathroom is conveniently located, catering to the needs of a busy household. The inviting sitting room serves as a welcoming space for relaxation and social gatherings, making it an ideal spot for entertaining friends or enjoying quiet evenings in.

Recently redecorated throughout, this home exudes a fresh and contemporary feel, allowing you to move in with ease and make it your own. The property also benefits from an allocated parking space, a valuable asset in this desirable area, ensuring that you have a secure place for your vehicle.

Regency Place is situated in a vibrant part of Canterbury, known for its rich history and cultural offerings. With local amenities, schools, and transport links nearby, this location is perfect for those who appreciate both convenience and community.

In summary, this four-bedroom mid-terrace house in Regency Place presents an excellent opportunity for anyone





looking to settle in a well-connected and picturesque part of Canterbury. With its spacious layout, modern finishes, and allocated parking for one car, this property is not to be missed.

Available now for 12 months tenancy
Rent £1,500 per month -EXCLUSIVE of Gas, Electricity, water charges, phone, internet, Sky and TV license.
Deposit £1730.00

Please refer to the fee's tab on our website (www.sallyhatcher.co.uk) for all information on fee's and deposit options



Floor Plan

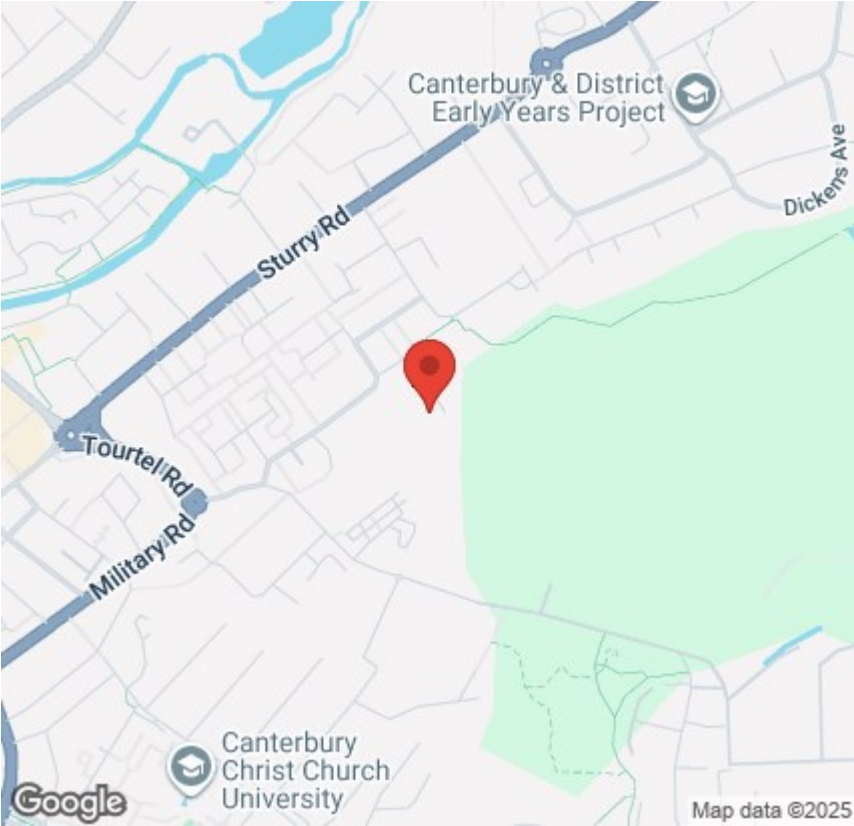


Viewing

Please contact us on 01227 733888 if you wish to arrange a viewing appointment for this property or require further information.

These particulars, whilst believed to be accurate are set out as a general outline only for guidance and do not constitute any part of an offer or contract. Intending purchasers should not rely on them as statements of representation of fact, but must satisfy themselves by inspection or otherwise as to their accuracy. No person in this firms employment has the authority to make or give any representation or warranty in respect of the property.

Area Map



Energy Efficiency Graph

